

ENTRADA INSTITUTE | 2024

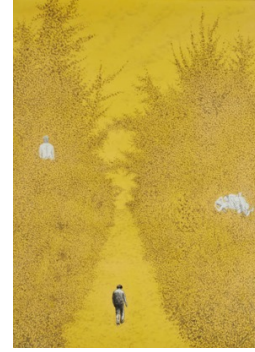
KOREAN DUO PAINT THE PARKS



Korean artists Chuni Park and Ji Oh Choi will present recent paintings and drawings and discuss their current Painting the Parks project. Starting with Capitol Reef National Park as Entrada Institute Artists-in-Residence, they will then paint their way through the country's many national parks.

To attend their presentation, go to www.entradainstitute.org, click on "Attend an Event," select this event, choose "Event Registration," and "Register." Events are also livestreamed at Entrada Institute on Facebook, and no reservation is needed to watch the event online.

Saturday April 6—7:00 p.m.
Robbers Roost
185 West Main Street
Torrey



Married Korean artists Chuni Park and Ji Oh Choi are launching their Painting the Parks project in Capitol Reef National Park. They have already spent long periods of time painting in Korea's parks and remote areas, expressing their love of nature. They are now exploring vast natural areas of the United States.

Park recently concluded a Baik Art Residency program in Santa Monica, California, and the two then began a tour of the American West. After surveying future work sites—the Grand Canyon, Bryce Canyon, Yosemite, and the Pacific Coastline—they established Hood River, Oregon, as home base.

Park typically uses traditional Korean art materials, such as Hanji paper and soot ink, to capture the grand mountainous landscapes around him. Choi, who uses acrylic materials in her painting, explores details in nature, her dreams, and spirituality. Her more colorful work often contrasts with her husband's semi-monochromatic paintings and drawings.

Both artists received their BFA and MFA degrees from Hongik University. Park's oversized landscapes have been exhibited internationally and in many solo and group exhibitions. Choi has shown her work throughout South Korea and has works in many prestigious collections.

ENTRADAINSTITUTE.ORG



[/entradainstitute](https://www.facebook.com/entradainstitute)

